



Blastco®
a TF Warren Company



FIELD APPLICATORS OF PROTECTIVE COATINGS AND LININGS

Blastco serves the following industries:

- Terminals
- Pipeline
- Petroleum Refining
- Water and Wastewater
- Chemical Processing
- Alternative Fuels
- Industrial Manufacturing

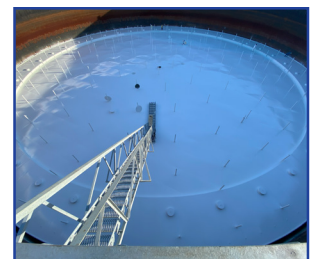
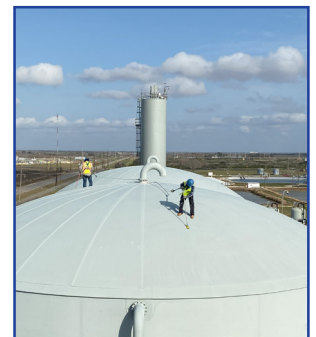
Blastco Overview

Blastco's history for high performance coatings began with field applications for above ground storage tanks. After years of quality service, we expanded into more complex fabrications and coating systems for petrochemical tanks and high temperature furnace units. We have also earned a positive reputation for rehabilitating bridges, dams, sluice gates (water gates), silos, lift stations, water treatment plants and related facilities. Utilizing both pin-lock and cup-lock type scaffolding systems, we design, install, and dismantle scaffolding for any type of application. Blastco sets itself apart by employing highly skilled and experienced craftsmen in their field of expertise. Blastco's material availability is vast, and our scaffold yards can be strategically located to service the scaffolding needs of our clientele throughout the United States and beyond.

From our success as a coatings and linings applicator, Blastco has grown into a general contractor role, taking responsibility for each step of the process. As a contractor, we have acquired the skills and staff to accomplish most of the processing inhouse. Any task that is outside our skill set is sub-contracted to reputable companies who have proven competence in this industry.

Blastco Capabilities

- Shop and field applications
- Maintenance and repair
- Fireproofing
- Above ground storage tanks
- Vessels
- Piping
- Scaffolding
- Steel structures
- Dams and spillways
- Lead abatement
- QP1, QP2, and QS1 Certified
- Members AMPP and AWWA
- Insulation



Blastco®
a TF Warren Company

C151112-R251404

16201 Wood Drive
Channelview, TX 77530
blastcosales@tfwarren.com
281-590-3200



WARREN GROUP

**YOUR SINGLE SOURCE
SOLUTION**
www.tfwarren.com